



Ventower Industries LLC will be accepting applications for Mechanical Assemblers, Plate Rollers/Cutters/Fabricators, Journeyman Welders and Fabricators, and Plural Component Painters for their new state of the art tower manufacturing facility in Monroe, Michigan on Monday February 21, 2011. Interested and qualified applicants can access the on line application either on the Ventower web site or at one of our partners locations, at Michigan Job Works in Monroe, at Monroe Community College, or at the Downriver Community Conference.

Candidates must be able to demonstrate:

- Journeyman Status or comparable experience for welding/fabricating positions
- Ability to work rotating shifts, weekends and holidays
- Ability to work 12 hour shifts and overtime
- Be able to pass a stringent practical test as well as written assessments
- Have the ability to work in a high quality, heavy industrial manufacturing setting with minimal supervision
- Be willing to perform a multitude of tasks in a high performing team environment
- Verifiable good work and attendance records

Final base wages for these positions have not yet been assigned. We envision these positions to enjoy a base wage in the range of \$15-\$20/hour. These wages will be complemented by a potentially lucrative bonus plan(s) that also will be finalized in the near future. In addition these positions will enjoy participation in our comprehensive benefit plans.

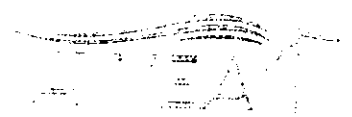
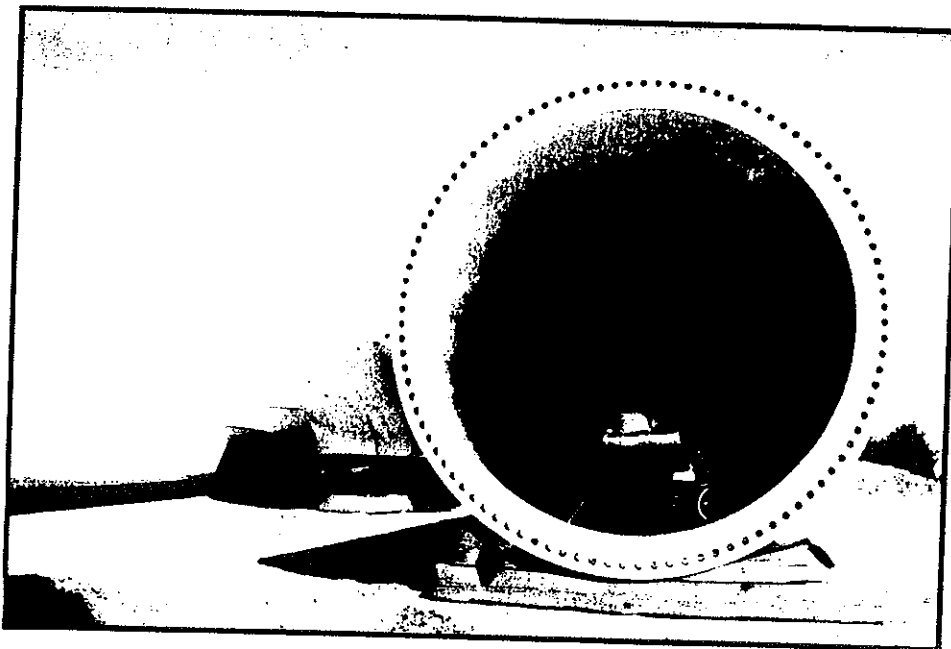
Ventower is a Drug Free Equal Access/Equal Opportunity Employer

IMPORTANT: TO APPLY FOR ONE OF THE JOBS LISTED ABOVE, YOU MUST GO TO VENTOWER'S HOME PAGE AND CLICK ON CAREERS AND FILL OUT THE ON-LINE APPLICATION. THESE JOBS SHOULD BE POSTED ON FEBRUARY 21, 2011 ON THEIR WEBSITE.

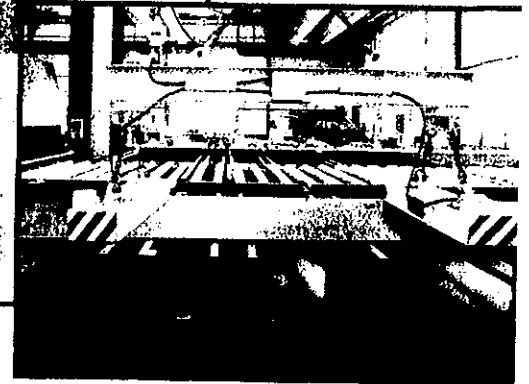
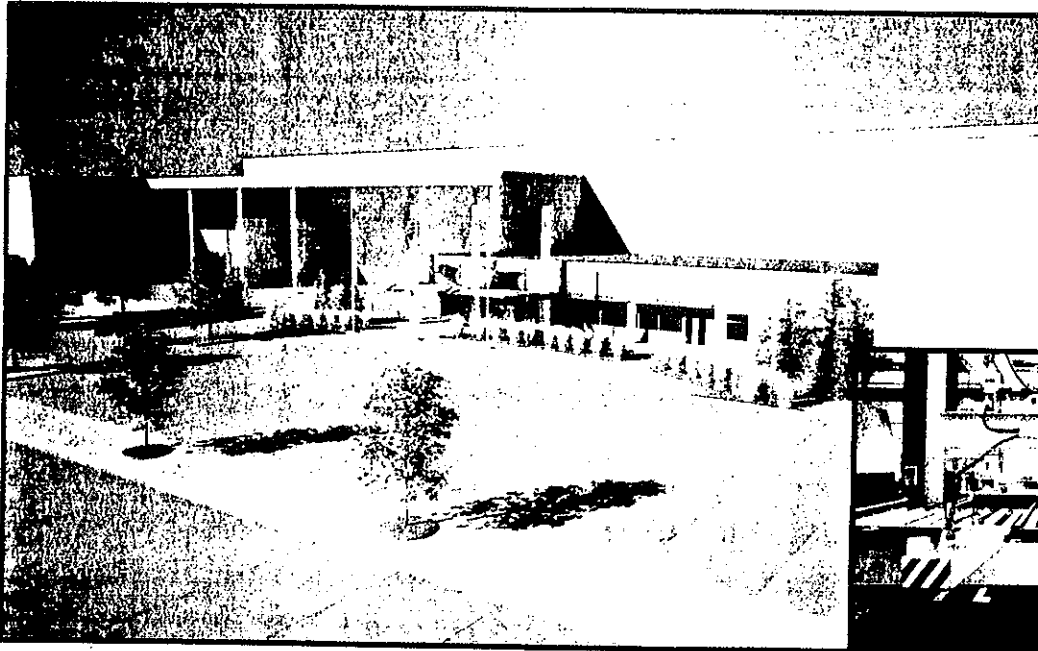
VENTOWER™ WIND TOWER FABRICATOR



Ventower Industries is a full service fabricator and supplier of industrial scale, wind turbine towers. Focused on original equipment manufacturers, VENTOWER™ offers many unique and competitive advantages for our customers. Our renewable energy minded team has extensive operational, manufacturing engineering and supply chain experience within the industry.



VENTOWER™ FACILITY



Our state of the art facility is equipped with the most technological advanced fabrication equipment to insure that our wind towers are built the highest quality standards, efficiently and on time.

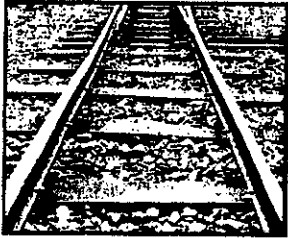
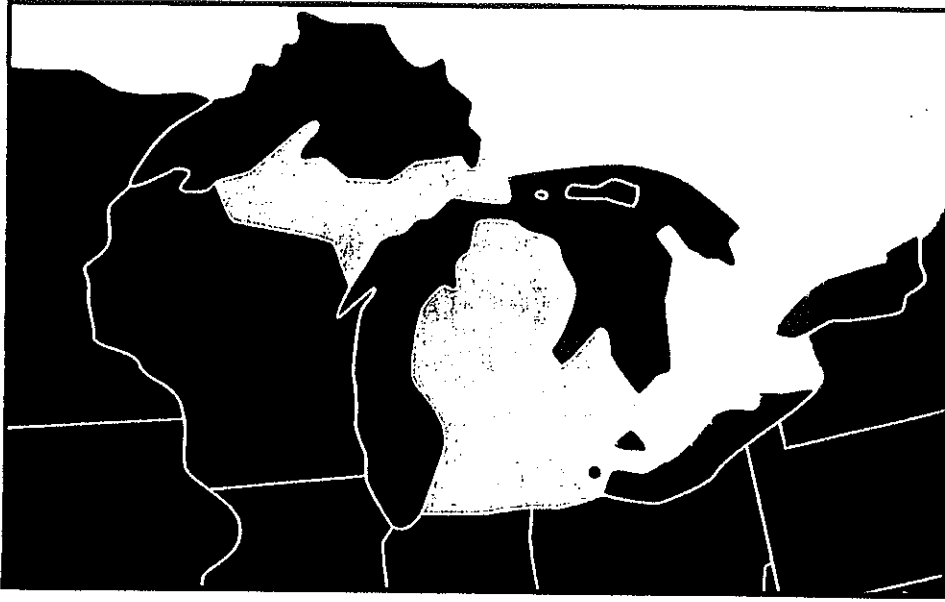
- 10' wide plate descaler
- High speed plasma and oxy-fuel cutting systems each on 100' long tables
- Plate rollers with full wind tower production options
- Six tandem SAW systems
- 120' long blast booth and two 120' long downdraft paint booths
- Overhead bridge cranes capable of lifting 80 ton sections



Manufacturing Plant Specifications:

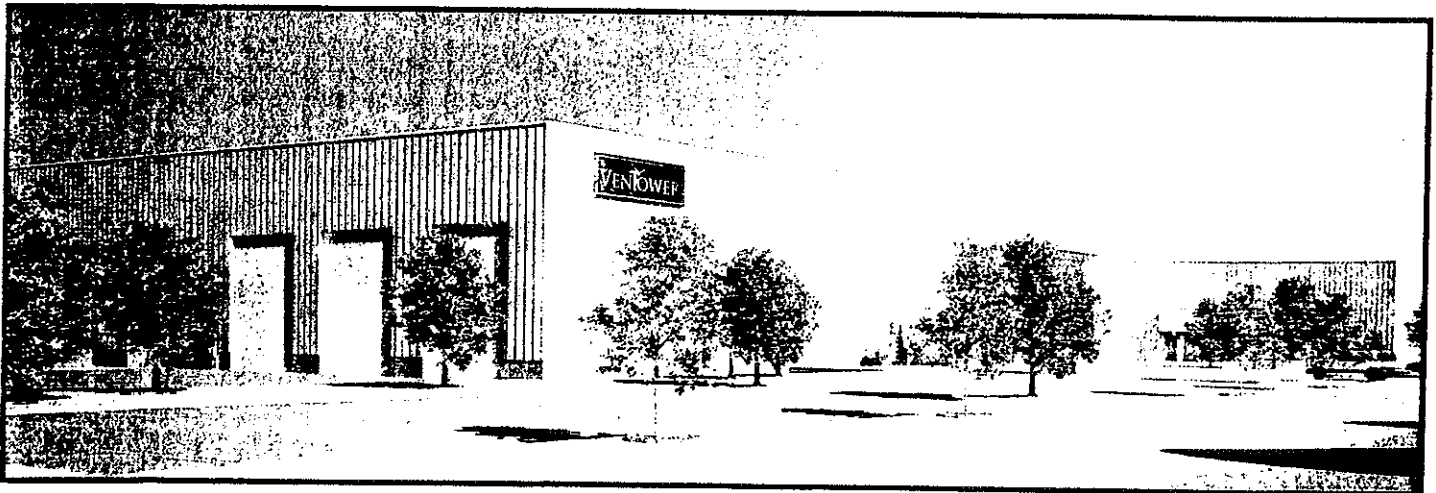
- LEED-inspired 115,000 sq. ft. (11,150 m²) purpose built wind tower facility
- Planned annual (phase 1) production capacity of 250+ towers
- Capable of building 100m+ towers
- Quality objectives Include ISO/QS certifications
- Second phase expansion to 220,000 sq. ft.

VENTOWER™ LOGISTICS



VENTOWER™ is strategically located at the Port of Monroe, Michigan. Using waterborne, rail and truck transport the manufacturing facility has many favorable and cost effective transportation options.

- Direct dock access and deep draft harbor on Lake Erie
- Two Class One railroads on site for direct rail shipments
- Less than a quarter mile from Interstate access



VENTOWER™ ADVANTAGES

Quality – Towers of precision built to design on some of the industry's most cutting edge and efficient equipment available. VENTOWER™ is committed to employ and retain the region's most highly skilled and certified fabrication workers.

Efficiency & Safety – Able to fulfill orders and sequence towers for just-in-time delivery with the highest regard for the safety of our customers and employees.

Consistency & Reliability – You can depend on VENTOWER™ to provide high quality wind towers on time...every time.

Cost Advantage – State of the art facility and Ventower's unparalleled ability to source key raw materials under our multi-year supply and consignment agreement with one of the world's largest steel producers.

Versatility – Being flexible and accommodating to our client's tower design and fabrication needs is essential. Our facility is ready for a second phase expansion to handle most complex tower designs and orders.

Service – Our renewable energy minded team puts our clients first to provide the most positive "order to delivery" experience possible.

Unique Logistical Advantage – Serving your projects around the Great Lakes States and beyond by using waterborne, rail and truck transport.

